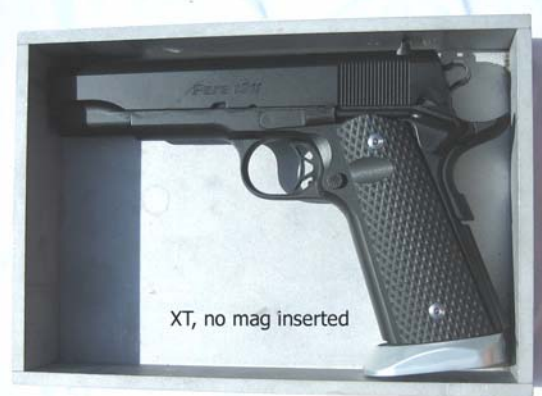


## Fitting Into the Single Stack Box (USPSA or IDPA)

We receive quite a lot of questions inquiring about whether or not our Techwell System "Fits Into The Box", the fact is that each one of our Techwell Magwells fits into "The Box" quite easily, only the extended base pads need to be ground down a little bit.

The following photo essay will demonstrate:

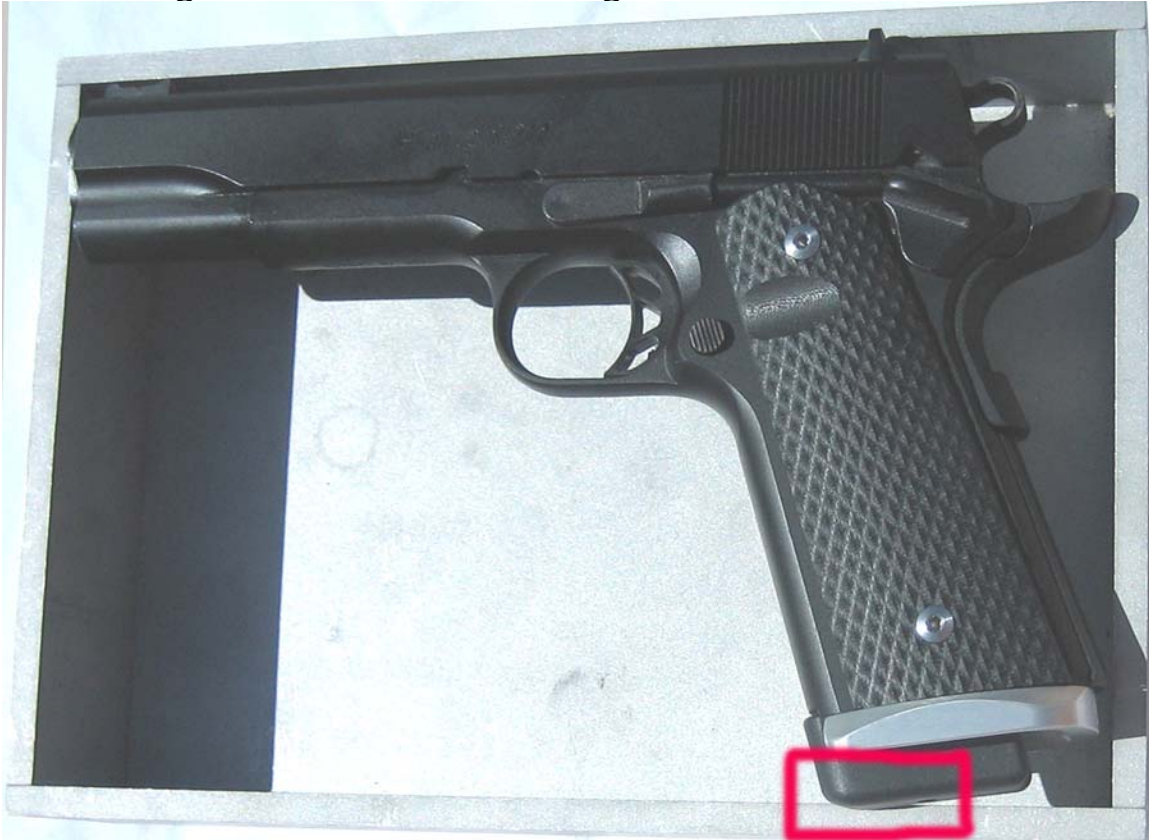
Here are each of Techwell models on Standard 1911's "In The Box" *without* magazines inserted, just to demonstrate clearances.



Now, here are each of Techwell models on Standard 1911's  
"In The Box" *with* magazines inserted.



So, as you can see, it is not the Techwell magwell we need to "fit into the box", it is the extended basepad of the magazine. Here is an example if a standard Chip McCormick PowerMag, and what has to be ground off to make it fit.



As you can clearly see here, it is only a few millimeters of the leading edge of the base pad.

